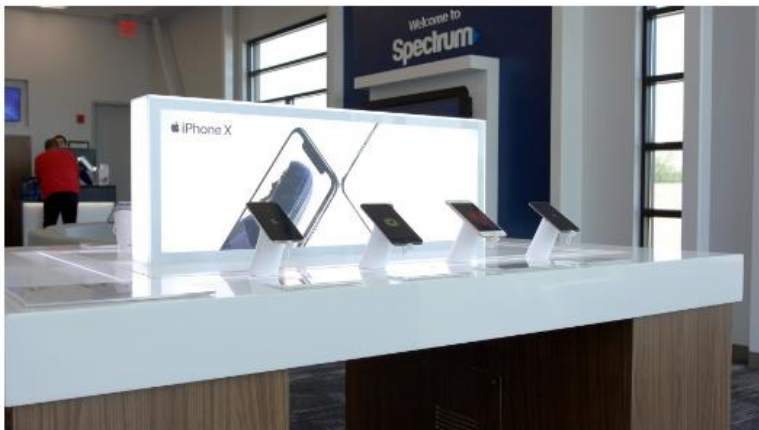




August 2023

Charter looks for premium treatment on Verizon's network.



Some of Charter Communications' mobile connections on Verizon's network are less likely to run into slowdowns when compared with similar offerings from those of its peer, Comcast, according to new findings from analyst Roger Entner of Recon Analytics.

"It's a deliberate strategy," Entner told Light Reading. Charter, he said, is "investing in this business [mobile] a lot more than Comcast is." Specifically, Entner explained that some of Charter's Spectrum Mobile plans access Verizon's network at a different quality of service (QoS) level than similar plans from Comcast's Xfinity Mobile service. Among some entry-level plans, Charter's QoS Class Identifier (QCI) sits at 8, while Comcast's QCI is 9, he said. A lower number represents better QoS.

[Read Full Article Here](#)

Comcast's 'Storm-Ready WiFi' taps Verizon's cellular network for backup



Borrowing a page from its business services menu, Comcast has launched **Storm-Ready WiFi**, a new residential offering that uses the Verizon cellular network as its backup Internet connection.

The new offering, designed to keep customers connected if the primary cable network goes down due to a storm or downed trees, has built-in support for Wi-Fi 6 and doubles as a Wi-Fi extender that's compatible with the operator's XB7 or XB8 DOCSIS 3.1 gateways. When power goes out, the customer's network is automatically transitioned to the cellular backup network, with speeds limited by the availability of the area's LTE service. According to the offering's fine print, the backup LTE network, when activated, provides speeds of up to 30 Mbit/s downstream and 7 Mbit/s upstream.

[Read Full Article Here](#)

SCTE Great Lakes Chapter & WICT Great Lakes are hosting an in-person event on Rural Broadband!



PRESENT
TECH IT OUT 2023



SAVE THE DATE

TUESDAY, SEPTEMBER 12, 2023
9:00AM-2:00PM
8AM COFFEE SOCIAL HOUR

When: Tuesday, September 12th, 2023

Where: VisTaTech Center

Address: 18600 Haggerty Rd, Livonia, MI 48152

Featuring:

Eric Frederick, Michigan High-speed Internet Office/LEO

Rob Austin, Lecom (former)

Mary Maliga-Brown, Comcast

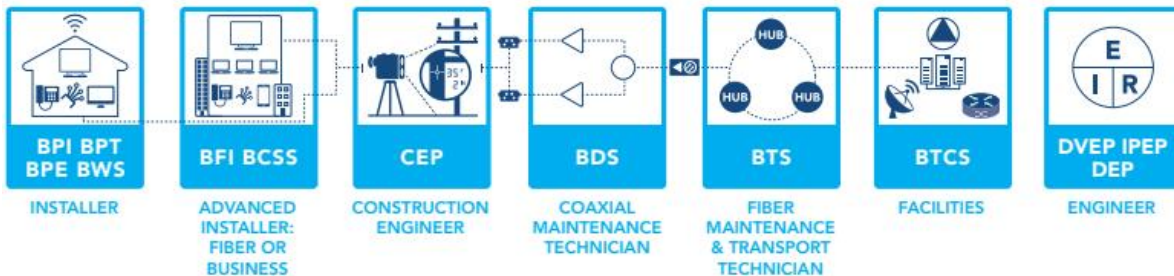
Surprise Guest Speaker

Register Here!

SCTE CHAPTER WEBINARS

Chapters can organize a training utilizing recordings of webinars presented by other chapters. The [full archive](#) is available to members as a benefit of membership.

SCTE CERTIFICATIONS FOR ALL AREAS OF THE CABLE TELECOMMUNICATION NETWORK.



SCTE-ISBE Great Lakes Chapter Certification

- We are still accepting certification requests.
- Please email scteglc@outlook.com with "Certification" in the subject.
- A Great Lakes Board Member will contact you and schedule testing
 1. Testing will be proctored in person.
 2. Social distancing will be observed & PPE will be worn during testing.

[SCTE - Great Lakes ChapterChapter](#)

